



M/V Bore Sea

Dutch flag, built by Flensburger Schiffbau-Gesellschaft 2011, Lloyds Register 100A1 Ro-Ro cargo ship. Finnish/Swedish ice class 1A, Call sign OJOU, IMO no. 9443554

Principal dimensions

Length over all	195.40 m
Breadth moulded	26.20 m
Draught design	7.05 m
Draught max	7.40 m

Tonnage

DWT on 7,05 m draught	12 200 t
GT London rules 1969	25 586 t
NT London rules 1969	7 676 t

Tank capacities

HFO/ MGO	1 313 m ³
MGO	153 m ³
Water ballast	6 072 m ³
Flume tanks	597 m ³

Ro-Ro capacity

	Area	Lane meter*	Max load
Upper deck	3 680 m ²	1 236 m	1.8/1.2 t/m ² †
Main deck	3 410 m ²	1 078 m	2.7 t/m ²
Lower hold	1 680 m ²	549 m	5.0 t/m ²
Total	8 770 m²	2 863 m	

*Lane meter based on lane width 2.97 m

†Reduced load on upper deck FWD of Frame 100 in case of loaded car deck in MD hold

	Volume	Deck Height
Main deck	23 404 m ³	6.55/7.0/7.4 m
Lower hold	11 004 m ³	6.55 m
Total	34 408 m³	

Car decks

	Area	Deck height
2 nd level MD	1 710 m ²	2.40 m
1 st level MD	1 000 m ²	2.10 m
Below 1 st & 2 nd level		4.25/2.20 m
Platform deck lower hold	1 665 m ²	2.0 m
Below		4.70 m
Total	4 375 m²	

Container capacity on upper deck

	Slots	Stack weight
45'	60	61 t
40'	60	61 t
30'	20	61 t
20'	46	48 t

Container capacity nominal 444 TEU upper deck.

Double stack containers on all cargo decks.

Reefer plugs

Bore Ltd

Details are believed to be correct but given without guarantee. Description not to be used in charterparties.

March 2024

Uudenmaankatu 16 A FI- 00120 Helsinki Ph. +358 9 6188 3300 firstname.surname@bore.eu www.bore.eu

Business ID 2375023-4

MEMBER OF **SPLIETHOFF GROUP**



Total 50 reefer plugs.

20 reefer plugs on main deck, 30 pcs on upper deck.

Reefer plugs 4 pole, 450 V, 60 Hz, 32 A

Ramps

One stern ramp 22.25 x 15 + 3 m flaps, max load 200 t. (PS corner of ramp is foldable, when corner folded ramp width 20.25 m)

Fixed ramp main deck – lower hold, slope <6°

Fixed ramp main deck - weather deck, slope <6°

Accommodation for drivers

Accommodation for 12 drivers in 6 cabins

Machinery

Main engine 1 x Wärtsilä 12V46F-CR, 12 000 kW with variable frequency drive (VFD) for optimal fuel consumption at low speed.

Open loop scrubber, Langtech.

Fuel quality ME: RMD 380, DMA.

Fuel quality AUX eng: DMA

2 x Diesel generators, 1 500 kVA each, 450 V 60 Hz

Shaft generator, 3 750 kVA

Bow thruster, 1 800 kW

Stern thruster, 900 kW

FRAMO anti-heeling system

Speed and consumption per day

Service speed abt 19.0 knots on abt 50 t IF-380

(At design draught 7.05 m and 300 kW shaft gen. load)

18.0 knots trailer draught (6.30 m) on abt 36 t IF-380

(Abt 5000 t payload, 300 kW shaft gen. load)

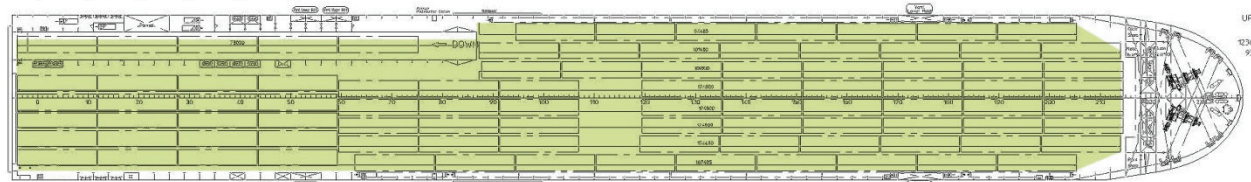
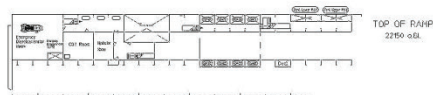
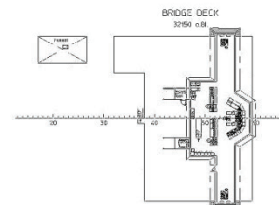
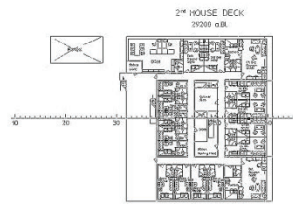
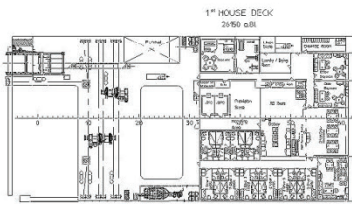
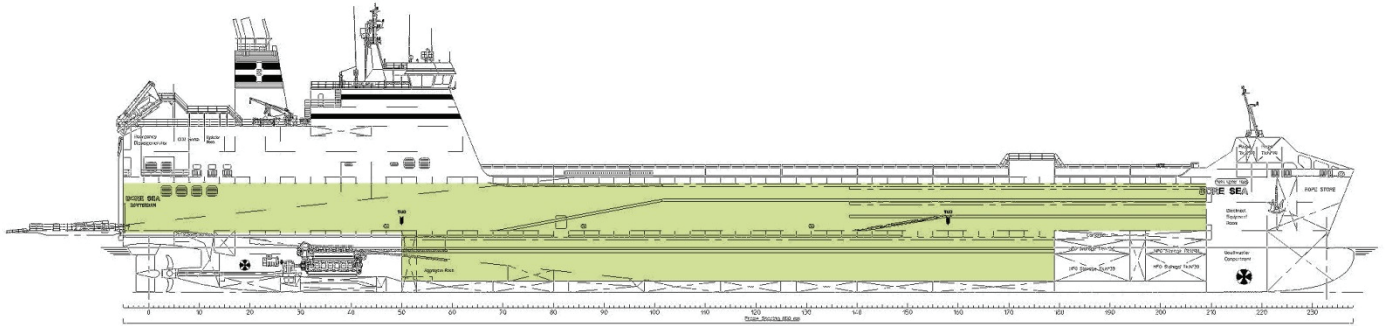
Flexible ECO speed between 12-19 knots.

Example 14 knots:

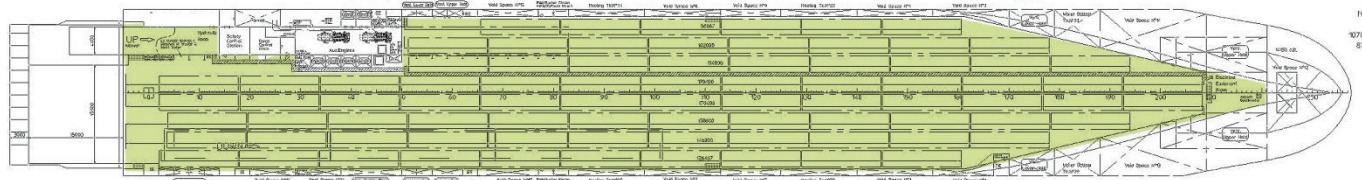
14.0 knots trailer draught (6,30 m) on abt 24 t IF-380

(Abt 5000 t payload, 300 kW shaft gen. load)

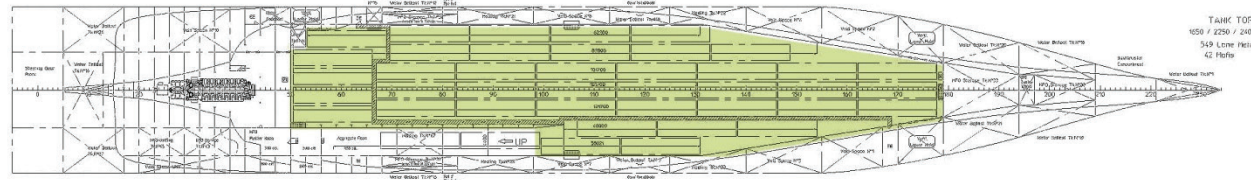
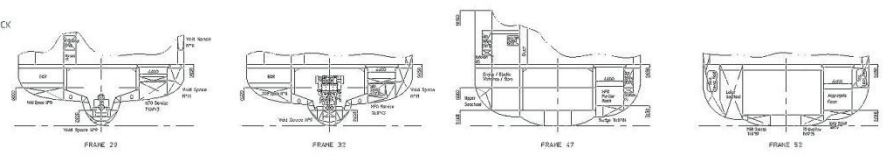
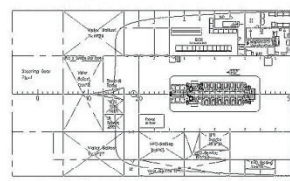
Harbour consumption abt 3 t MGO



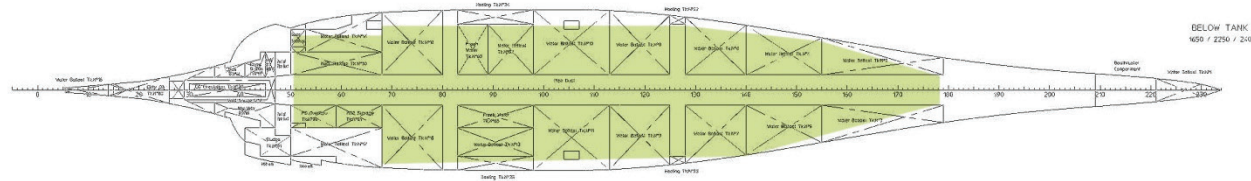
UPPER DECK
8100 o.B.L.
136 Long Pellets
93 Halls



MAIN DECK
9650 o.B.L.
1076 Long Pellets
82 Halls



TANK TOP
1550 / 2250 / 2400 o.B.L.
349 Long Pellets
42 Halls



BELOW TANK TOP
1650 / 2250 / 2400 o.B.L.